

EuroLite

Steel Doors & Windows

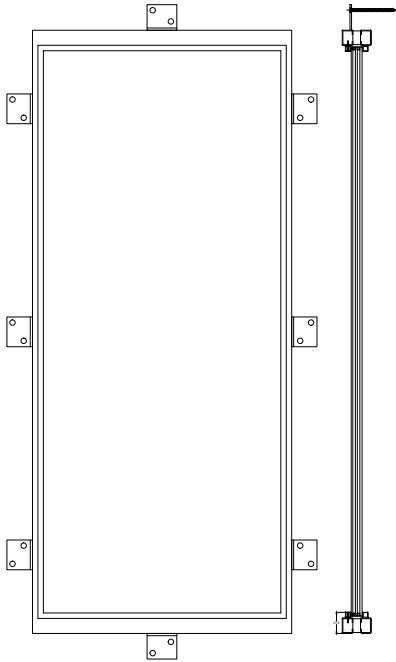
ET68-FMC-0

ET68 EXTERIOR FIXED WINDOW MATCH

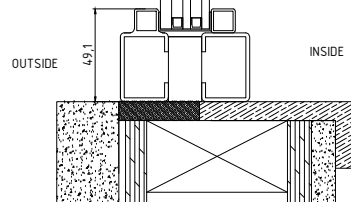
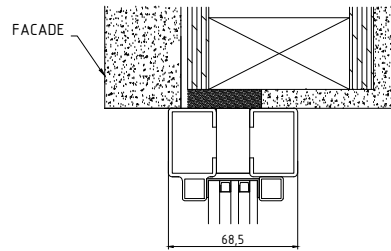
Locking: TBD
Operation:
Hinges:

Glazing:
Dual/Triple pane Krypton Gas Filled
Overall Thickness:
Integral Noise Control Included
Low E Options Available
Fully Tempered
Spacer, Black
Factory Installed Wet Glazing w Steel Stop
1/2" and 1" Muntins Available - FDL

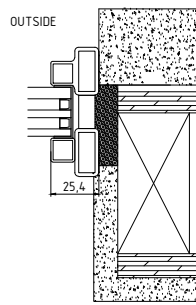
Climate Proofing:
Integral Thermal Break
Dual Pressure Seals
Dual Vane Seals
Frame:
Depth: 68 mm
Attachment: Mounting Lug
Finish:
Thermally Bonded Zinc Galvanized
2 Coats Epoxy Primer
3 Coats Acrylic Lacquer
3 Coats Clear Polyurethane



* MUNTINS ARE OPTIONAL



VERTICAL SECTION



HORIZONTAL SECTION