

EuroLite

Steel Doors & Windows

ET68-IC-XX

ET68 EXTERIOR INSWING DOUBLE CASEMENT

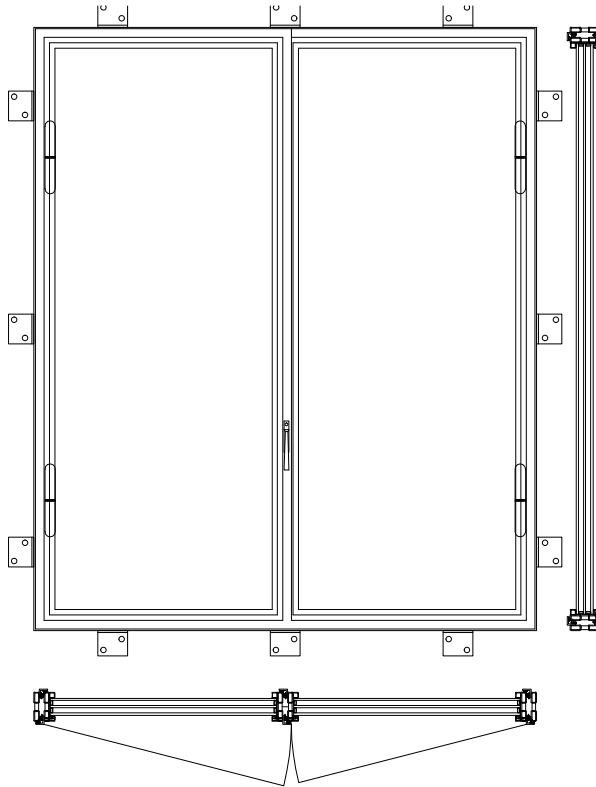
Locking: Casement Latch
 Operation: Rotary Handle Operator
 Hinges: Welded

Climate Proofing:
 Integral Thermal Break
 Dual Thermal Seals
 Dual Air Seals

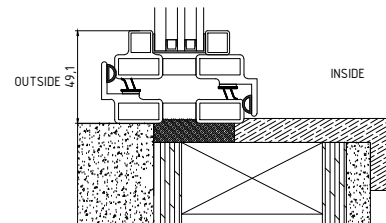
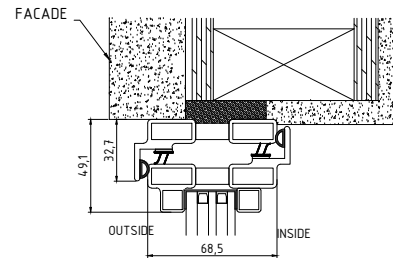
Glazing:
 Dual/Triple pane Krypton Gas Filled
 Integral Noise Control Included
 Low E Options Available
 Fully Tempered
 Spacer, Black
 Factory Installed Wet Glazing w Steel Stop
 1/2" and 1" Muntins Available - FDL

Frame:
 Depth: 68 mm
 Attachment: Nail Fin (optional)

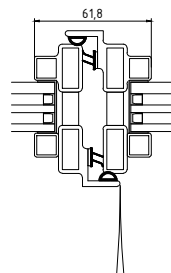
Finish:
 Thermally Bonded Zinc Galvanized
 2 Coats Epoxy Primer
 3 Coats Acrylic Lacquer
 3 Coats Clear Polyurethane



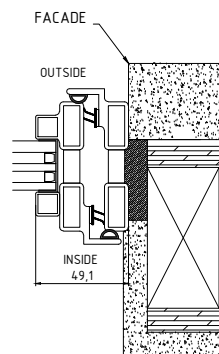
* MUNTINS ARE OPTIONAL



VERTICAL SECTION



MEETING STILES



JAMB & STILE