

EuroLite

Steel Doors & Windows

ET68-WD-XX
ET68 EXTERIOR INSWING DOUBLE DOOR

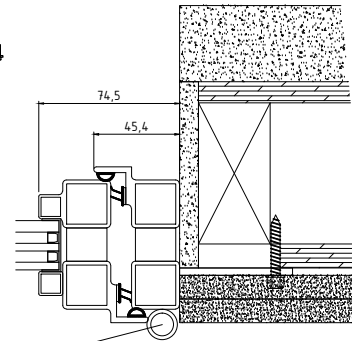
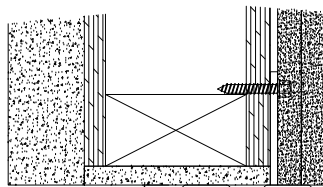
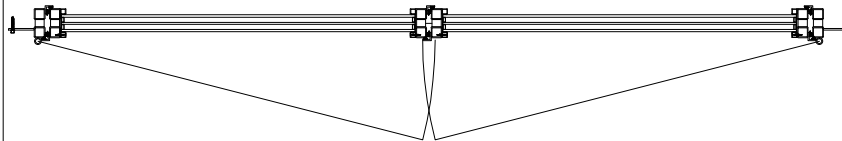
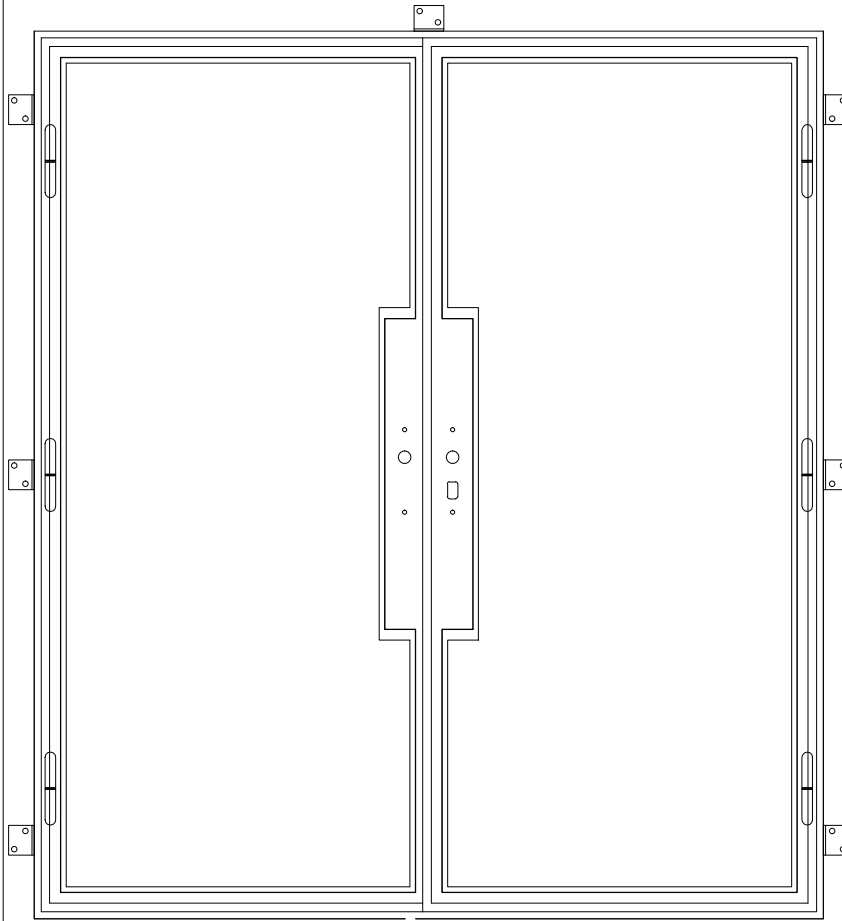
Locking: TBD
Operation:
Hinges: Welded Steel Barrel
Hinges w Brass Bearing

Glazing:
Dual/Triple pane Krypton Gas Filled
Integral Noise Control Included
Low E Options Available
Fully Tempered
Spacer, Black
Factory Installed Wet Glazing w Steel Stop
1/2" and 1" Muntins Available - FDL

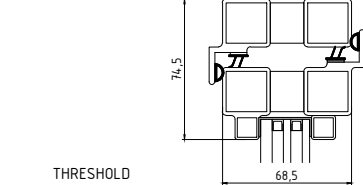
Climate Proofing:
Integral Thermal Break
Dual Thermal Seals
Dual Air Seals

Frame:
Depth: 68 mm
Attachment: Mounting Lug
Finish:
Thermally Bonded Zinc Galvanized
2 Coats Epoxy Primer
3 Coats Acrylic Lacquer
3 Coats Clear Polyurethane

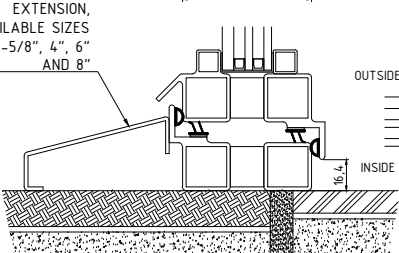
* MUNTINS ARE OPTIONAL



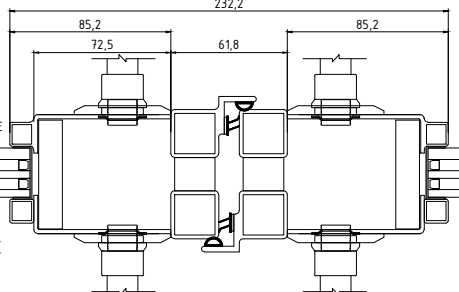
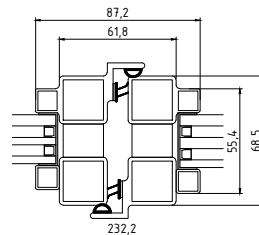
JAMB & STILE



THRESHOLD
EXTENSION,
AVAILABLE SIZES
2-5/8", 4", 6"
AND 8"



VERTICAL SECTION



MEETING STILES & LOCK BOX