

# EuroLite

Steel Doors & Windows

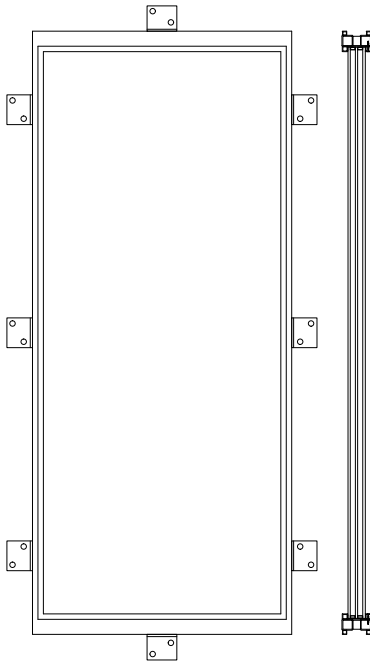
ET68-FMD-0

## ET68 EXTERIOR FIXED DOOR MATCH

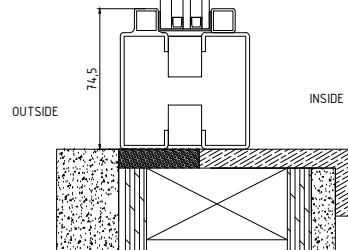
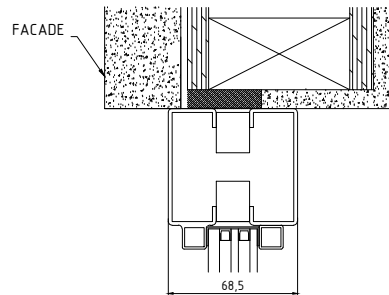
Locking: TBD  
Operation:  
Hinges:

Glazing:  
Dual/Triple pane Krypton Gas Filled  
Overall Thickness:  
Integral Noise Control Included  
Low E Options Available  
Fully Tempered  
Spacer, Black  
Factory Installed Wet Glazing w Steel Stop  
1/2" and 1" Muntins Available - FDL

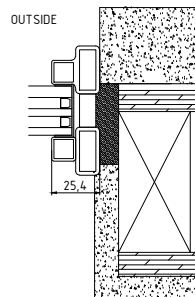
Climate Proofing:  
Integral Thermal Break  
Dual Pressure Seals  
Dual Vane Seals  
Frame:  
Depth: 68 mm  
Attachment: Mounting Lug  
Finish:  
Thermally Bonded Zinc Galvanized  
2 Coats Epoxy Primer  
3 Coats Acrylic Lacquer  
3 Coats Clear Polyurethane



\* MUNTINS ARE OPTIONAL



VERTICAL SECTION



HORIZONTAL SECTION