

# EuroLite

Steel Doors & Windows

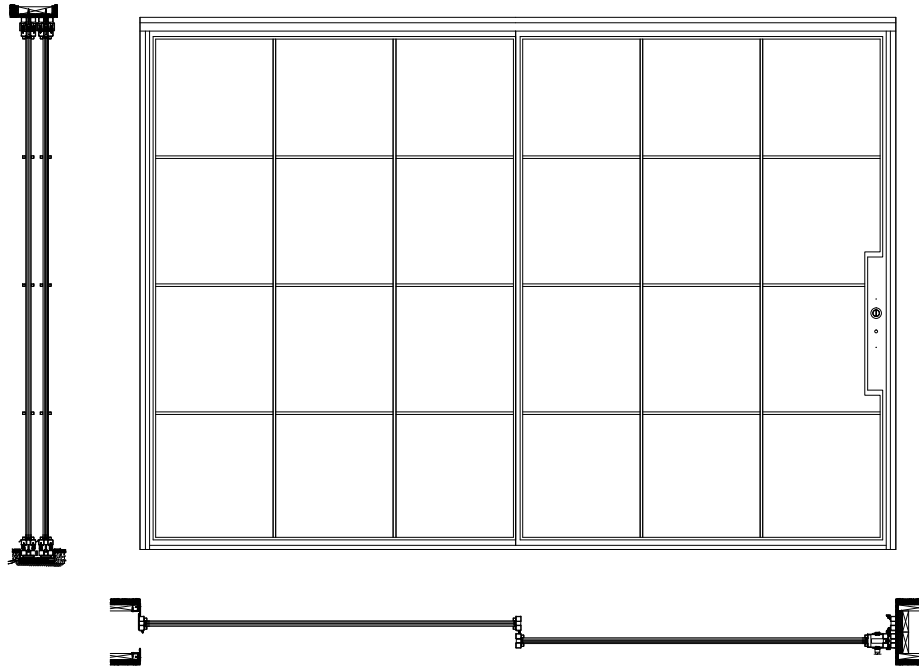
## ET68-PD-21 EXTERNAL SLIDE POCKET DOOR - DOUBLE ONE POCKET

Locking: TBD  
Operation:  
Hinges: No

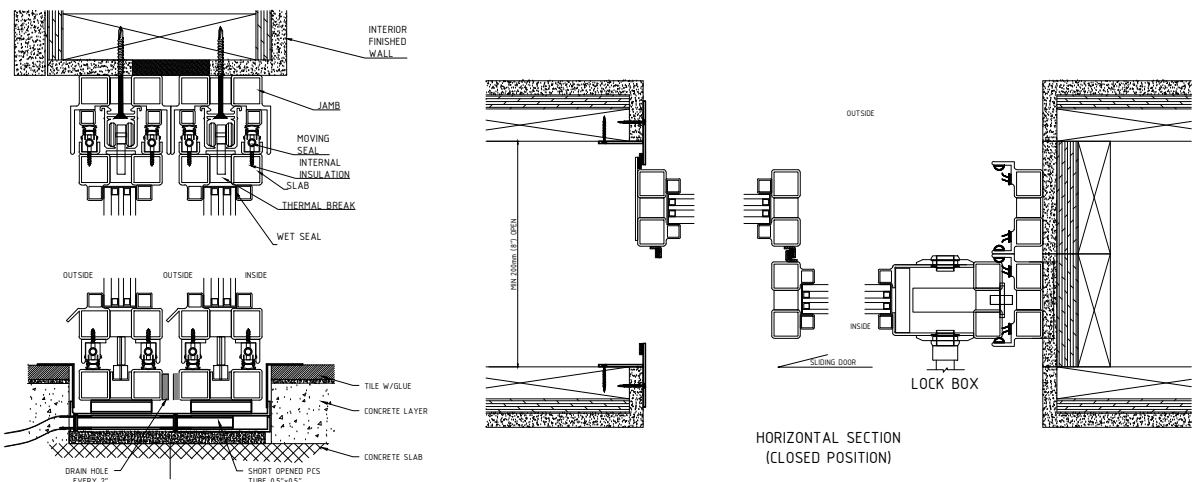
Glazing:  
Dual/Triple pane Krypton Gas Filled  
Integral Noise Control Included  
Low E Options Available  
Fully Tempered  
Spacer, Black  
Factory Installed Wet Glazing w Steel Stop  
1/2" and 1" Muntins Available - FDL

Climate Proofing:  
Integral Thermal Break  
Dual Falling Seals

Frame:  
Depth: 68 mm  
Attachment: Mounting Lug  
Finish:  
Thermally Bonded Zinc Galvanized  
2 Coats Epoxy Primer  
3 Coats Acrylic Lacquer  
3 Coats Clear Polyurethane



\* MUNTINS ARE OPTIONAL



HORIZONTAL SECTION  
(CLOSED POSITION)